

Pruning Guidelines:

When pruning your trees it is important to follow these guidelines to ensure minimal damage to your tree and to allow the best chance to heal.

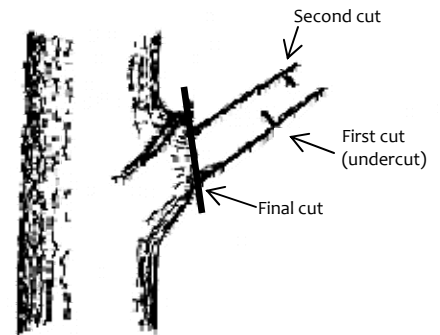
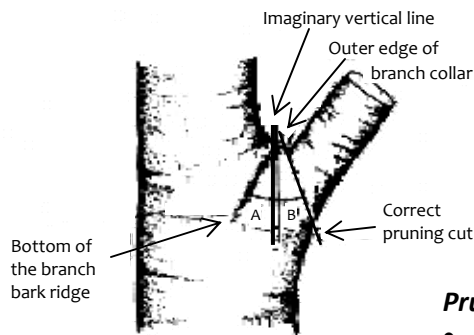
Best Time to Prune:

The best time to prune trees or shrubs is late winter to early spring, before the leaves break bud. Any time when they are dormant is better than summer months. However, any dead, dying, or broken limbs should be pruned immediately.

Making the proper cut when there is not visible branch collar: If you cannot see the branch collar, the rule of thumb is to make the cut a mirror image of the branch bark ridge. As shown to the right.

General Pruning Guidelines

Pruning technique: branch collar absent

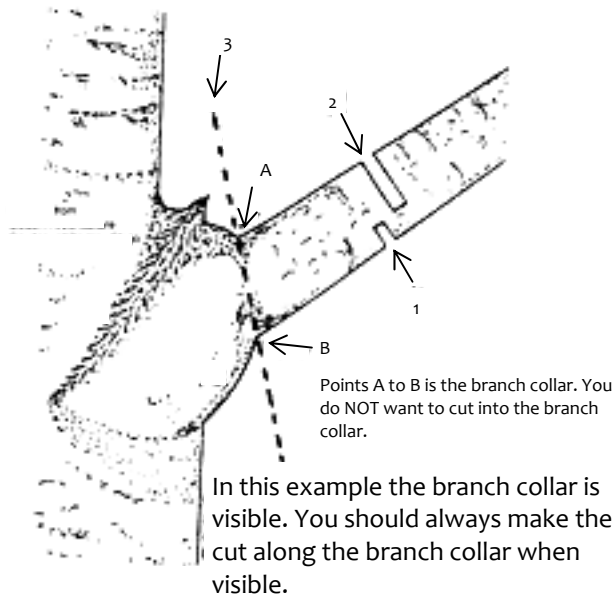


Pruning Tips:

- Always use sharp, well maintained tools
- Never top trees, consult a certified arborist if you are considering a canopy reduction
- Do not apply any paint or other compounds to tree wounds, trees can seal their wounds.

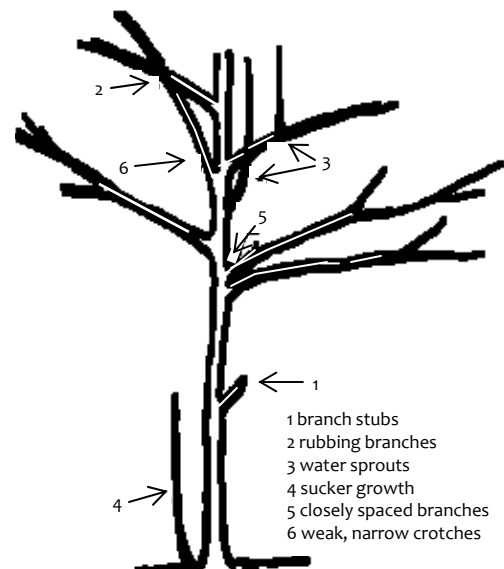
Pruning Larger Limbs

To prevent further damage, such as bark tearing, follow these guidelines.



Pruning Younger Trees

Typically younger trees don't need any pruning. However, here are some conditions you should look for on your young trees. If none of these conditions are present your tree does NOT need pruning.



For more information on proper pruning and planting techniques contact:

Aaron Wang
Community Forestry Specialist
South Dakota Department of Agriculture
523 E. Capitol Avenue
Pierre, SD 57501-3182
605.773.3594
aaron.wang@state.sd.us

In accordance with Federal law and U.S. Department of Agriculture policy, this institution is prohibited from discriminating on the basis of race, color, national origin, sex, age or disability. (Not all prohibited bases apply to all programs.)
To File a complaint of discrimination: write USDA, Office of Civil Rights, Room 326-W, Whitten Building, 1400 Independence Avenue, SW, Washington, D.C. 20250-9410 or call (202) 720-5964 (voice and TDD). USDA is an equal opportunity provider and employer. The division is a recipient of Federal funds.

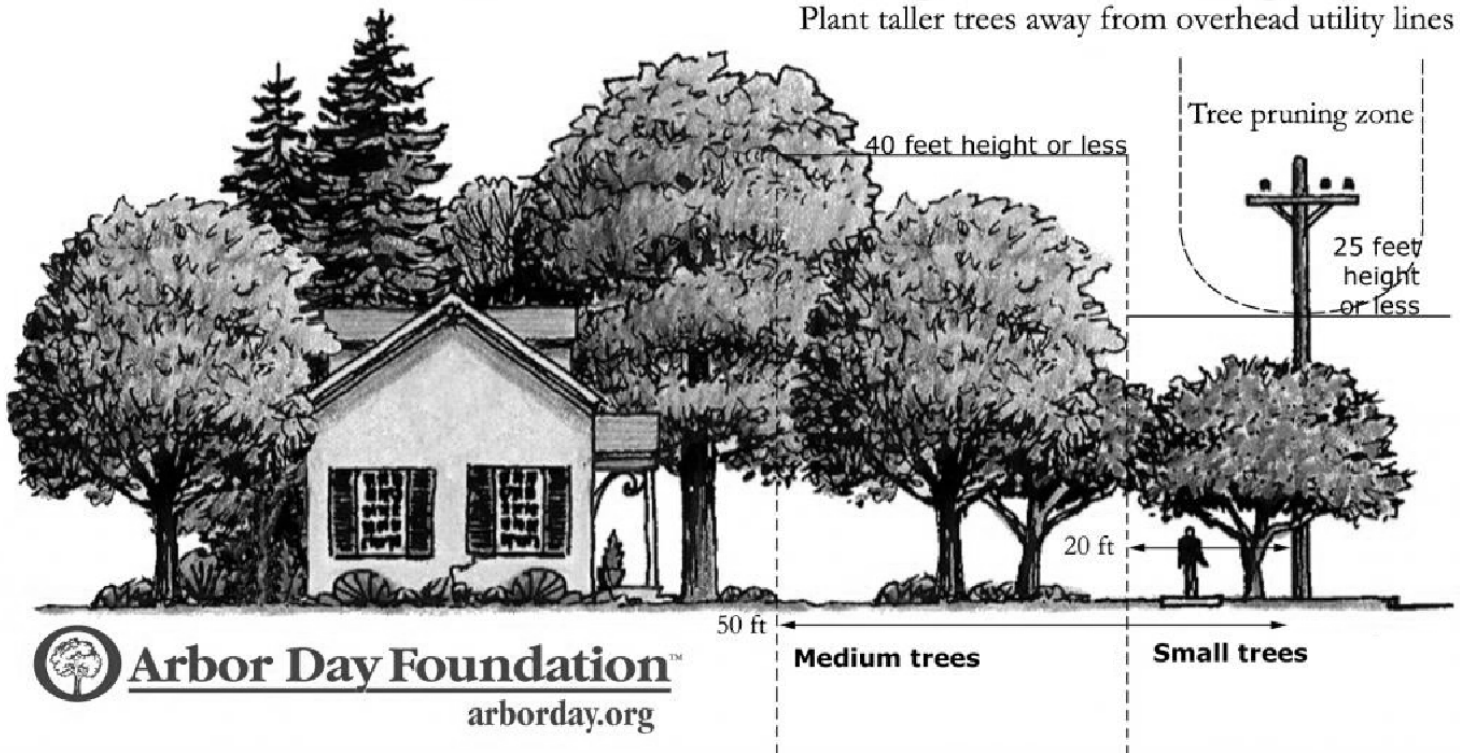


Proper Tree Planting

Tall trees

Plant the right tree in the right place

Plant taller trees away from overhead utility lines



Tree and Planting Site Selection

Avoid tree-utility conflicts, plant small trees underneath utility lines. Trees are an effective ways to save energy in all seasons. Plant large deciduous trees on the south and southwest sides of structures, the shade they provide will intercept summer sunlight and save on cooling costs. Plant large evergreen trees to the north and northwest of structures to shelter from cold winter winds, saving on heating costs.

Proper Tree Planting

Planting a tree correctly can double its lifespan and drastically increase growth rates.

Remove all tags and other material from the tree. Remove all containers, burlap, wires, and ties from the tree. A tree should be planted with the root collar level with the ground. Scrape back soil at the top of the root ball until the trunk flare is exposed, where the roots flare out from the base of the stem.

Digging a hole too shallow and mounding soil up to the root collar is better than digging too deep and leaving a basin around the tree. The majority of developed tree roots are in the top 12 inches of soil, loosen or rototill the soil one foot deep and five times the diameter of the root ball around the planting hole to facilitate vigorous root growth.

Always handle the tree by the root ball, not the trunk or branches. Cut any encircling roots before planting. Do not over-pack backfill when planting. Water well, and mulch 2-4 inches deep around the tree, leaving a 6 inch clear space around the base of the trunk.

When staking, place the stakes in the direction of prevailing winds, to prevent movement during wind events.

